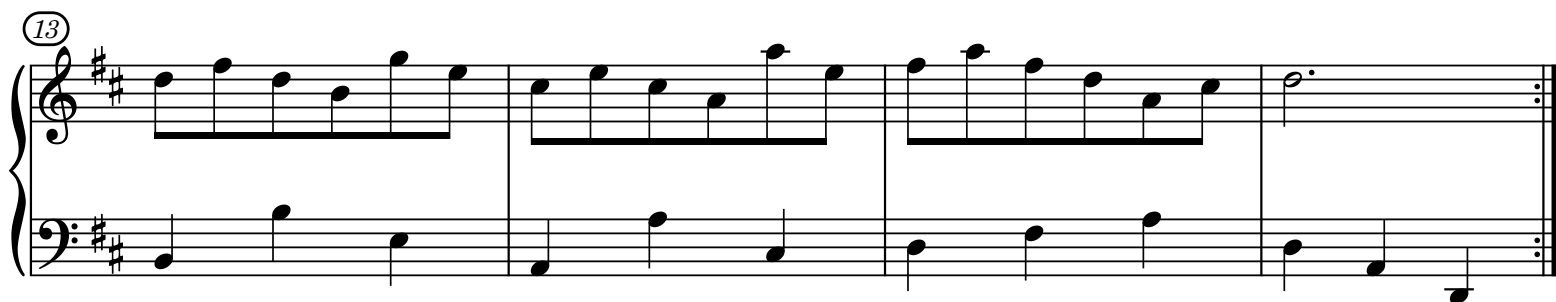
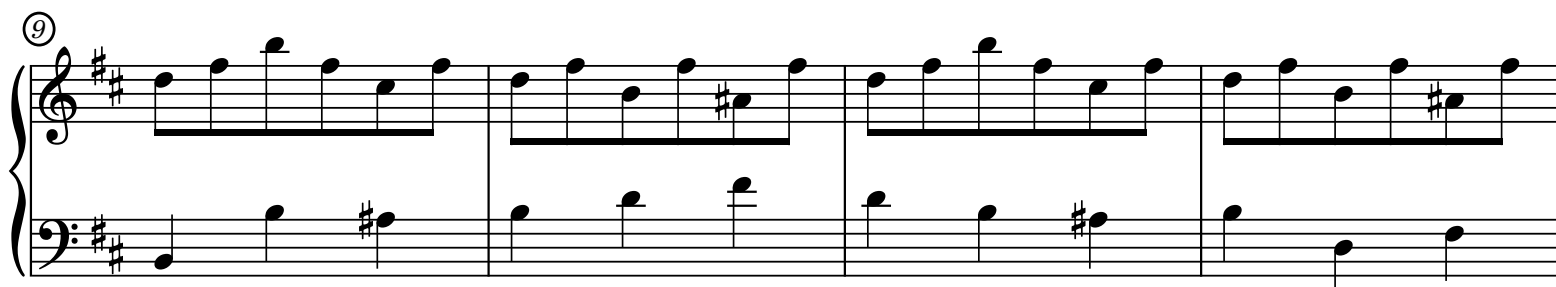
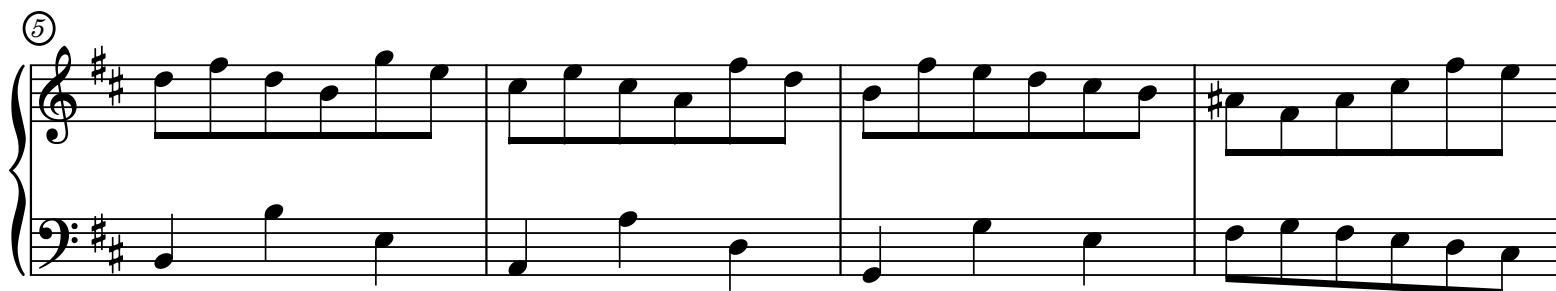


Minuetto in Bm

Dalla Suite francese n.3 BWV 814

J.S.Bach



(17)

Measures 17-20 of a musical score in D major. The treble staff features a descending eighth-note scale in measures 17 and 18, followed by a half-note scale in measure 19 and a half-note chord in measure 20. The bass staff provides a steady eighth-note accompaniment throughout the four measures.

(21)

Measures 21-24 of a musical score in D major. The treble staff begins with a half-note chord in measure 21, followed by a half-note scale in measure 22, a descending eighth-note scale in measure 23, and a half-note chord in measure 24. The bass staff continues with an eighth-note accompaniment, including a chromatic descent in measure 22.

(25)

Measures 25-28 of a musical score in D major. The treble staff features a half-note chord in measure 25, a half-note scale in measure 26, a half-note chord in measure 27, and a half-note scale in measure 28. The bass staff provides an eighth-note accompaniment, with a chromatic ascent in measure 27.

(29)

Measures 29-32 of a musical score in D major. The treble staff consists of a continuous eighth-note scale across all four measures. The bass staff provides a simple eighth-note accompaniment.

(33)

Measures 33-36 of a musical score in D major. The treble staff features a continuous eighth-note scale across all four measures. The bass staff provides a simple eighth-note accompaniment, ending with a final chord in measure 36.